

**POWER SUPPLY:**

- Power consumption: 500W@220V
- AC95-240V,50/60Hz

**PACKING AND DIMENSION:**

- Carton size:490X405X315(MM)
- Flight case size:790x520x620(MM)
- Net weight:6KG

## 10.Maintence and Cleaning

The following points have to be considered during the inspection:

- 1) All screws for installing the devices or parts of the device have to be tightly connected and must not be corroded.
- 2) There must not be any deformations on the housing, color lenses, fixations and installation spots(ceilingsuspension, trussing).
- 3) Mechanically moved parts must not show any traces of wearing and must not rotate with unbalances.
- 4) The electric power supply cables must not show any damage, material fatigue or sediments. Further instructions depending on the installation spot and usage have to be adhered by a skilled installer and any safety problems have to be removed.

**CAUTION!**

**Disconnect from mains before starting maintenance operation.**

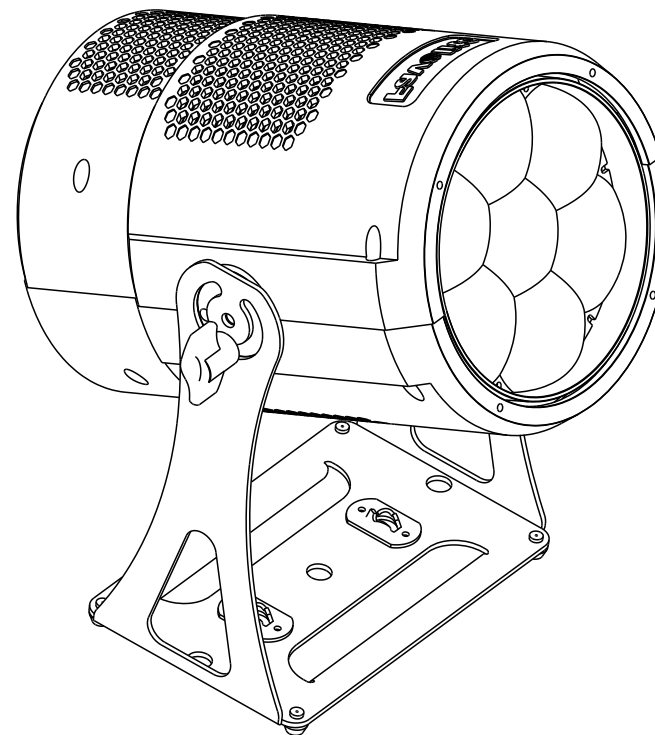
In order to make the lights in good condition and extend the life time, we suggest a regular cleaning to the lights.

- 1) Clean the inside and outside lens each week to avoid the weakness of the lights due to accumulation of dust
- 2) Clean the fan each week
- 3) A detailed electric check by approved electrical engineer each three month, make sure that the circuit contacts are in good condition, prevent the poor contact of circuit from overheating.

We recommend a frequent cleaning of the device. Please use a moist, lint-free cloth. Never use alcohol or solvents.

There are no serviceable parts inside the device. Please refer to the instructions under "Installation instructions".

Should you need any spare parts, please order genuine parts from your local dealer.

**Favolite****P-760**

## USER MANUAL

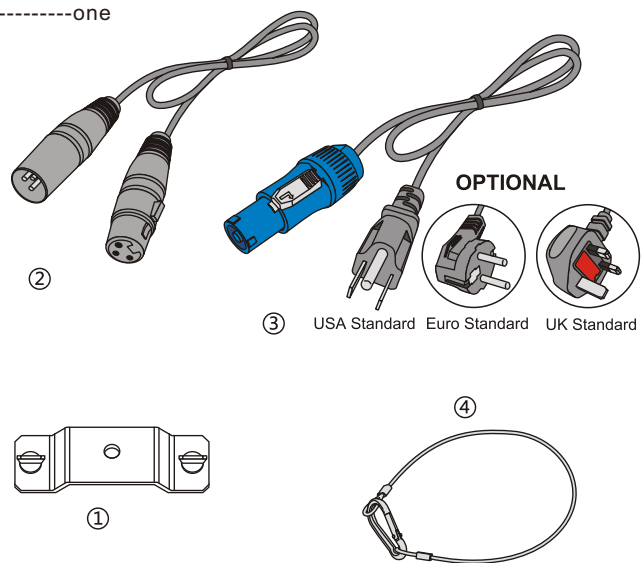
1.Unpacking

Thanks for choosing the P-760.For your own safety,please read this manual before installing the devices.This manual cover the important information on the installation and applications.Meanwhile please keep this manual for the future needs.

The P-760 is made of a new type of high temperature strength of engineering plastic and cast aluminum with nice look.The fixture is designed and manufactured strictly following CE and RoHs Standards,complying with international standard DMX 512 protocol.It's available independently controlled and linkable with each other for operation.And it is applicable for large-scale live performances,theater,studio,night clubs and discos.

P-760 adopts powerful 60W OSRAM RGBW LED which features high brightness and stability.Please carefully unpack it when you receive the fixture and check whether it is damaged during the transportation.And please check whether the following item are included inside the carton box:

- Par light-----one
- Omega clamp-----one
- Signal cable-----one
- Power cable-----one
- Safty wire-----one



\*1

In special mode,the relationship between channel settings and signals:

| Signal      | Channel Set | State                                  |
|-------------|-------------|--|
| DMX512      | 17,12,9,7   | DMX512 17,12,9,7CHS                    |
|             | 2           | RGBW 100% ,can adjust dimmer,zoom      |
|             | 1           | RGBW 100% ,can adjust dimmer           |
| DEMO        | -           | Play Demo                              |
| PROGRAM 1~8 | 17,12,9,7   | Play Program1~8                        |
|             | 2           | Play Program1~8,Can Adjust Dimmer,Zoom |
|             | 1           | Play Program1~8,Can Adjust Dimmer      |
| SNAP-SHOT   | 17,12,9,7,2 | Play SNAP-SHOT,Can Adjust Dimmer,Zoom  |
|             | 1           | Play SNAP-SHOT,Can Adjust Dimmer       |

9.Specifications

OPTICS:

- Light source:7×60W Osram RGBW LEDs,50,000 hs.
- Color temperature: 2700-10000k adjustable

COLORS:

- Linear RGBW ,color mixing with unlimited colors, dynamic colour
- macro effect with variable speed
- Super uniform light beam with no colour shadows;

EFFECT SECTION:

- Wash, beam
- 2.5°-60° Electronic Zoom angle
- Digital Wash-Beam effect
- 0-100% linear electronic dimmer without color variation
- Adjustable speed stop/strobe effect with instantaneous blackout
- Dedicated channel for color temperature setting
- RGBW auto-tuning
- Control mode: International standard DMX512,3-pin/5-pin DMX512, sACN(option)
- Standard mode :17/12/9/7 channels, 1/2 channel (SNAP-SHOT)

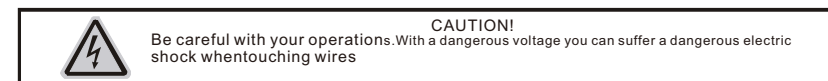
OTHER FUNCTION:

- 2.4inch color LCD screen
- High reliability touch button
- Support auto flip display
- Support Multi-language
- Automatic monitoring of light source temperature
- high temperature automatic protection
- Intelligent cooling system
- DMX512 Software update
- Display light use time
- Low level linearity,flicker free film TV
- 100%brightness without stroboscopic problem
- Menu setting by internal rechargeable battery without power supply (3.7V rechargeable lithium-ion battery)
- Intelligent control of wind speed
- Reverse display
- Manual programming
- Memory function (SNAP-SHOT)

17/12/9/7 channels, 1/2 channel (SNAP-SHOT)

|    |    |   |   |  |                                     |         |                                  |
|----|----|---|---|--|-------------------------------------|---------|----------------------------------|
|    |    |   |   |  |                                     | 51      | LEE 202                          |
|    |    |   |   |  |                                     | 52      | LEE 709                          |
|    |    |   |   |  |                                     | 53      | LEE 110                          |
|    |    |   |   |  |                                     | 54~74   | LEE 328                          |
|    |    |   |   |  |                                     | 75~80   | LEE 332                          |
|    |    |   |   |  |                                     | 81~82   | LEE 113                          |
|    |    |   |   |  |                                     | 83~95   | LEE 026                          |
|    |    |   |   |  |                                     | 96~101  | LEE 022                          |
|    |    |   |   |  |                                     | 102~108 | LEE 158                          |
|    |    |   |   |  |                                     | 109~114 | LEE 768                          |
|    |    |   |   |  |                                     | 115~124 | LEE 100                          |
|    |    |   |   |  |                                     | 125~134 | LEE 088                          |
|    |    |   |   |  |                                     | 135~144 | LEE 122                          |
|    |    |   |   |  |                                     | 145~150 | LEE 089                          |
|    |    |   |   |  |                                     | 151     | LEE 322                          |
|    |    |   |   |  |                                     | 152~155 | LEE 124                          |
|    |    |   |   |  |                                     | 156~158 | LEE 115                          |
|    |    |   |   |  |                                     | 159~163 | LEE 353                          |
|    |    |   |   |  |                                     | 164~179 | LEE 724                          |
|    |    |   |   |  |                                     | 180~199 | LEE 068                          |
|    |    |   |   |  |                                     | 200~222 | LEE 721                          |
|    |    |   |   |  |                                     | 223~233 | LEE 127                          |
|    |    |   |   |  |                                     | 234~239 | LEE 704                          |
|    |    |   |   |  |                                     | 240~255 | Rainbow Effect From Slow To Fast |
| 11 | 7  | 5 | 5 |  | Strobe                              | 0~131   | No Function                      |
|    |    |   |   |  |                                     | 132~175 | Half Strobe From Slow To Fast    |
|    |    |   |   |  |                                     | 176~247 | Flash Strobe From Slow To Fast   |
|    |    |   |   |  |                                     | 248~251 | Sync Random Strobe               |
|    |    |   |   |  |                                     | 252~255 | Asynchronous Random Strobe       |
| 12 | 8  | 6 | 6 |  | Dimmer                              | 0~65535 |                                  |
| 13 |    |   |   |  | Dimmer 16Bit                        |         |                                  |
| 14 | 9  | 7 |   |  | Dimmer Frequency & Curve Properties | 0~31    | 806Hz-Exponential Curve          |
|    |    |   |   |  |                                     | 32~63   | 806Hz-Linear                     |
|    |    |   |   |  |                                     | 64~95   | 1562Hz-Exponential Curve         |
|    |    |   |   |  |                                     | 96~127  | 1562Hz-Linear                    |
|    |    |   |   |  |                                     | 128~159 | 5000Hz-Exponential Curve         |
|    |    |   |   |  |                                     | 160~191 | 5000Hz-Linear                    |
|    |    |   |   |  |                                     | 192~223 | 8333Hz-Exponential Curve         |
|    |    |   |   |  |                                     | 224~255 | 8333Hz-Linear                    |
| 15 | 10 |   |   |  | Dimmer Fade Speed                   | 0~7     | Auto Fade                        |
|    |    |   |   |  |                                     | 8~247   | Slow To Fast                     |
|    |    |   |   |  |                                     | 248~255 | Fastest And No Fade              |
| 16 | 11 | 8 | 7 |  | Zoom                                | 0~255   | Zoom From Wide To Narrow         |
| 17 | 12 | 9 |   |  | Reset                               | 0~19    | No Function                      |
|    |    |   |   |  |                                     | 20~29   | Reset All                        |
|    |    |   |   |  |                                     | 30~189  | No Function                      |
|    |    |   |   |  |                                     | 190~199 | Unlock The Setting Lock          |
|    |    |   |   |  |                                     | 200~255 | Record A SNAP-SHOT               |

## 2.safety instructions



This device has left the factory in perfect condition. In order to maintain this condition and to ensure a safe operation, it is absolutely necessary for the user to follow the safety instructions and warning notes written in this user manual.

If the device has been exposed to temperature changes due to environmental changes, do not switch it on immediately. The arising condensation could damage the device. Leave the device switched off until it has reached room temperature.

This device falls under protection-class I. Therefore it is essential that the device be earthed.

The electric connection must carry out by qualified person.

The device shall only be used with rated voltage and frequency.

Make sure that the available voltage is not higher than stated at the end of this manual.

Make sure the power cord is never crimped or damaged by sharp edges. If this would be the case, replacement of the cable must be done by an authorized dealer.

Always disconnect from the mains, when the device is not in use or before cleaning it. Only handle the power cord by the plug. Never pull out the plug by tugging the power cord.

During initial start-up some smoke or smell may arise. This is a normal process and does not necessarily mean that the device is defective, it should decrease gradually.

Please don't project the beam onto combustible substances.

Fixtures cannot be installed on combustible substances, keep more than 50cm distance with wall for smooth air flow, so there should be no shelter for fans and ventilation for heat radiation.

If the external flexible cable or cord of this luminaire is damaged, it shall be exclusively replaced by the manufacturer or his service agent or a similar qualified person in order to avoid a hazard.

### 3. Operation Instructions.

- The Par light is for beam effect for onsite decoration purpose.
- Don't turn on the fixture if it's been through severe temperature difference like after transportation because it might damage the light due to the environment changes. So make sure to operate the fixture until it is in normal temperature.
- This light should be keep away from strong shaking during any transportation or movement
- Dont pull up the light by only the head, or it might cause damages to the mechanical parts
- Don't expose the fixture in overheat, moisture or environment with too much dust when installing it. And don't lay any power cables on the floor. Or it might cause electronic shock to the people.
- Make sure the installation place is in good safety condition before installing the fixture.
- Make sure to put the safety chain and check whether the screws are screwed properly when installing the fixture.
- Make sure the lens are in good condition. It's recommended to replace the units if there are any damages or severe scratch.
- Make sure the fixture is operated by qualified personnel who knows the fixture before using
- Keep the original packages if any second shipment is needed.
- Dont try to change the fixtures without any instruction by the manufacturer or the appointed repairing agencies.
- It is not in warranty range if there are any malfunctions from not following the user manual to operate or any illegal operation, like shock short circuit, electronic shock, lamp broke, etc.

1/2 channel mode (SNAP-SHOT) use:

1. 17/12/9 Channel value : 200-255

(Record the final program status in 17/12/9 Channel Mode)

2.Menu-SETTING-SIGNAL-SNAP-SHOT

3.Menu-SETTING-CHANNEL SET-1/2

\*Note:1.The status restore varies based on Dimmer/Zoom

2.Play SNAP-SHOT,17/12/9/7 Channel Mode

can ONLY Adjust Dimmer(Channel 1),Zoom (Channel 2)

### 4.Mounting and Installation

Cautions: For added protection mount the fixtures in areas outside walking paths, seating areas, or in areas were the fixture might be reached by unauthorized personnel. Before mounting the fixture to any surface, make sure that the installation area can hold a minimum point load of 10 times the devices weight.

Fixture installation must always be secured with a secondary safety att attachment, such as an appropriate safety cable.

### 8. Control Channels

17/12/9/7 channels, 1/2 channel (SNAP-SHOT)

| Channel |      |     |     |     |     | Function           | DMX value   | Feacture   |
|---------|------|-----|-----|-----|-----|--------------------|---|--|
| 17CH    | 12CH | 9CH | 7CH | 1CH | 2CH |                    |   |  |
|         |      |     |     | 1   | 1   | Dimmer             |   | SNAP-SHOT, Special Mode*1  |
|         |      |     |     |     | 2   | Zoom               |   | SNAP-SHOT,Special Mode*1   |
| 1       | 1    | 1   | 1   |     |     | Red                | 0~255/65535   |  |
| 2       |      |     |     |     |     | Red 16Bit          |   |  |
| 3       | 2    | 2   | 2   |     |     | Green              | 0~255/65535   |  |
| 4       |      |     |     |     |     | Green 16Bit        |   |  |
| 5       | 3    | 3   | 3   |     |     | Blue               | 0~255/65535   |  |
| 6       |      |     |     |     |     | Blue 16Bit         |   |  |
| 7       | 4    | 4   | 4   |     |     | White              | 0~255/65535   |  |
| 8       |      |     |     |     |     | Whiet 16Bit        |   |  |
| 9       | 5    |     |     |     |     | Colour Temperature | 0~3<br>4,5<br>6,7<br>8,9<br>10,11<br>12,13<br>14,15<br>16,17<br>18,19<br>20~255   | NO Used<br>10000<br>8000<br>7000<br>6500<br>5600<br>4200<br>3200<br>2700<br>10000~2700   |
| 10      | 6    |     |     |     |     | Colour Macro       | 0~1<br>2,3<br>4,5<br>6,7<br>8,9<br>10,11<br>12,13<br>14,15<br>16~239<br>16~17<br>18~19<br>20~21<br>22~23<br>24~25<br>26~27<br>28~29<br>30~31<br>32~33<br>34~35<br>36~37<br>38~39<br>40~41<br>42~43<br>44~45<br>46~47<br>48~49<br>50 | No Function<br>All Lights Up<br>Red<br>Yellow<br>Green<br>Cyan<br>Blue<br>Purple<br>Colour Macro<br>LEE 013<br>LEE 021<br>LEE 135<br>LEE 122<br>LEE 088<br>LEE 131<br>LEE 724<br>LEE 161<br>LEE 721<br>LEE 104<br>LEE 703<br>LEE 795<br>LEE 793<br>LEE 332<br>LEE 113<br>LEE 108<br>LEE 109<br>LEE 242 |

## 7.Menu for Control Display

|             |               |  |
|-------------|---------------|--|
| INFORMATION | ADDRESS       | 1~512  |
|             | RUNTIME       | TIME   |
|             | VERSION       |  |
|             | TEMPERATURE   | MAIN BOARD(NO FUNCTION)<br>LIGHT SOURCE XX°C                                       |
|             | FAN SPEED     | FH XXXX (HEAD FAN SPEED)<br>F1 XX.X(CASE FAN VOLTAGE)<br>F2 XX.X(CASE FAN VOLTAGE) |
|             | ERROR MESSAGE |  |
| SETTING     | RESET         | REBOOT<br>DEFAULT DATA   |
|             | CHANNEL SET   | 12/17/9/7/2/1  |
|             | SIGNAL        | DMX512/DEMO/PROGRAM1~8/<br>SNAP-SHOT   |
|             | OFFLINE SET   | HOME/HOLD  |
|             | FAN MODE      | NORMAL/PERFORMANCE/QUIET   |
|             | WIRELESS SET  | DISCONNECT<br>SEARCH RECEIVER  |
|             | ADJUST        | ZOOM   |
|             | ARTNET SET    | IP ADDRESS<br>SUBNET MASK<br>UNIVERSE  |
|             | RDM UID       | XXXXXXXXXXXX   |
|             | LAMP          | LAMP ADJUST(RGBW)  |
| DISPLAY     | LANGUAGE      | ENGLISH/CHINESE  |
|             | BACKLIGHT     | ON/OFF/FLASH   |
|             | REVERSE       | ON/OFF/AUTO  |
| USER        | SETTING LOCK  | ENTER 1234 TO UNLOCK   |
|             | KEY LOCK      | ON/OFF   |
|             | TEST          |  |
|             | PROGRAM       | SELECT PROGRAM 1~8<br>EDIT PROGRAM   |

### ERROR CODE:

|     |                                   |
|-----|-----------------------------------|
| EZM | Zoom Error                        |
| ETM | Temperature Sensor Error          |
| EFN | Fan Error                         |
| E02 | Data Error, Load Default Settings |

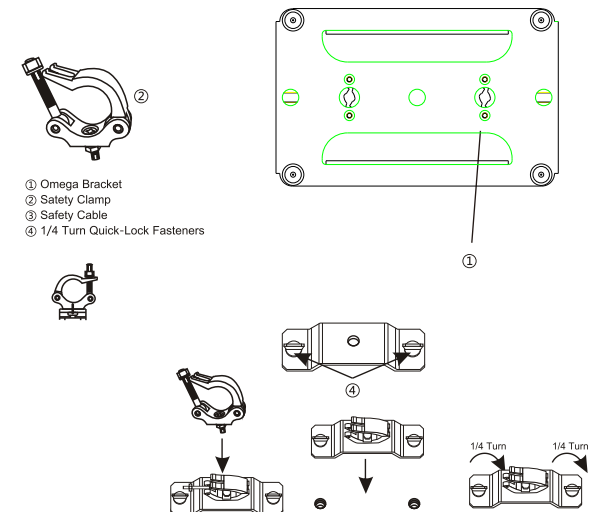
Never stand directly below the device when mounting, removing, or servicing the fixture from a ceiling, or set on a flat level surface (see illustration below). Be sure this fixture is kept at least 0.5m(1.5 f) away from any flammable materials (decoration etc).

Always use and install the supplied safety cable as a safety measure to prevent accidental damage and/or injury in the event the clamp fails.

Mounting points: Overhead mounting requires extensive experience, including amongst others calculating working load limits, a fine knowledge of the installation material being used and periodic safety inspection of all installation material and the fixture. If you lack these qualifications, do not attempt the installation yourself. Improper installation can result in bodily injury.

Be sure to complete all rigging and installation procedures before connecting the main power cord to the appropriate wall outlet.

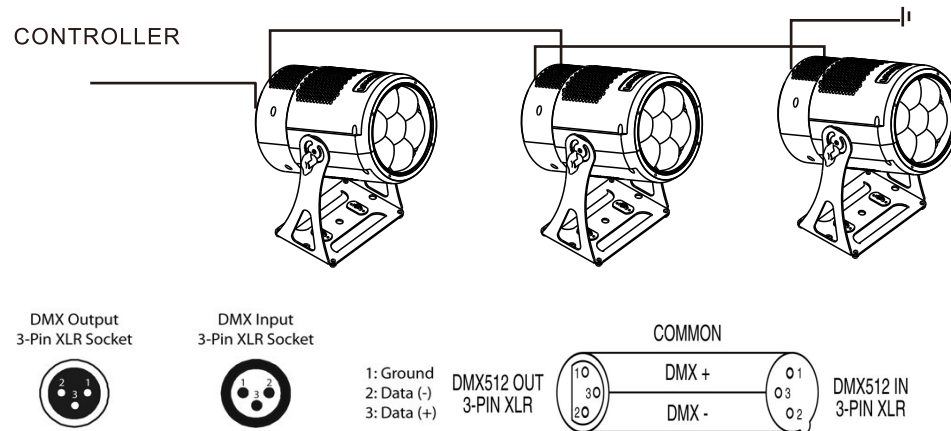
Clamp Mounting: the P-760 Par light provides a unique mounting bracket assembly that integrates the bottom of the base, the included "Omega Bracket and the safety cable rigging point in one unit(see the illustration below). When mounting this fixture to truss be sure to secure an appropriately rated clamp to the included omega bracket using a M10 screw fitted through the center hole of the "omega bracket". As an added safety measure be sure to attached at least one properly rate the bases.



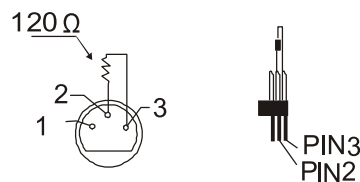
Regardless of the rigging option you choose for your LED wash, always be sure to secure your fixture with a safety cable. The fixture provides a built-in rigging point for a safety cable on the hanging bracket as illustrated above. Be sure to only use the designated rigging point for the safety cable and never secure a safety cable to a carrying handle.

## 5. DMX-512 control connections

Connect the provided XLR cable to the female 3-pin XLR output of your controller and the other side to the male 3-pin XLR input of the Par light. You can chain multiple Par light together through serial linking. The cable needed should be two core, screened cable with XLR input and output connectors. Please refer to diagram below DMX-512 connection with DMX terminator.

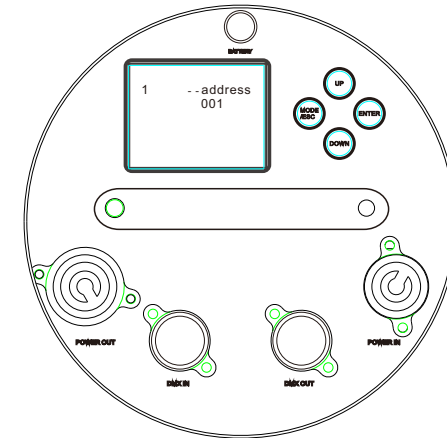


For installations where the DMX cable has to run a long distance or is in an electrically noisy environment, such as in a discotheque, it is recommended to use a DMX terminator. This helps in preventing corruption of the digital control signal by electrical noise. The DMX terminator is simply an XLR plug with a 120  $\Omega$  resistor connected between pins 2 and 3, which is then plugged into the output XLR socket of the last fixture in the chain. Please see illustrations below.

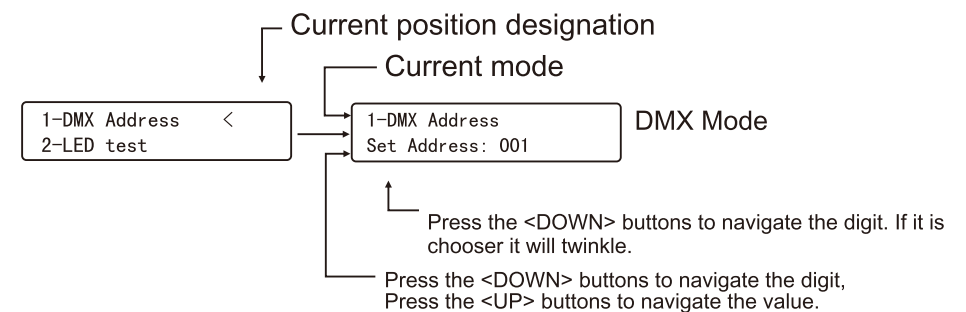


## That Control Display

### 6. Top menu, present the current operation:



2. Press the <UP> or <DOWN> button repeatedly until you reach the desired menu function. Press the <ENTER> button to select the menu function currently displayed, or to enable menu option. To return to the previous option or menu without changing the value, press the <MODE/ESC> button.



Press the Battery button to set the DMX address. Please use **3.7V rechargeable lithium battery**, don't use others. Ni-MH batteries, lithium iron phosphate batteries, non-rechargeable batteries, and lithium batteries of other voltages cannot be placed, otherwise, it may cause an explosion after charging.